

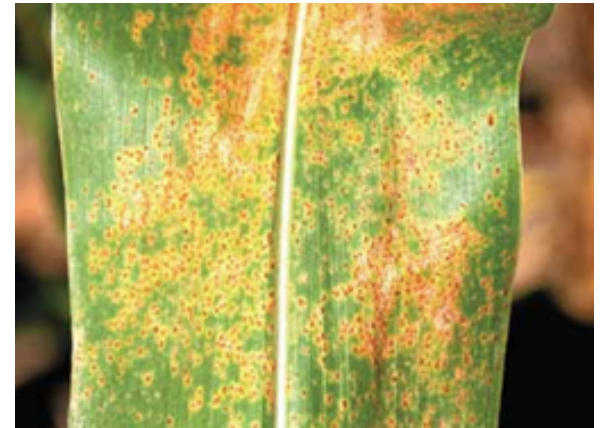
Doniphan Ag Talk Series:

Crop Diseases, Weeds, and Lunch

Thursday, January 22nd

Welcome 11:00 AM
Thursday, January 22nd

Wathena Community Building
303 E St Joseph Street
Wathena, KS



Did Southern Rust impact
your corn crop this year?

Please RSVP by Jan 21st for meal count.

(785)-985-3623 or kgsharp@ksu.edu



Meal is free thanks to our sponsor!

KANSAS STATE
UNIVERSITY

Extension
Doniphan County

This institution is committed to providing equal opportunity for participation in all programs, services, and activities. Program information may be available in languages other than English. Language access requests and reasonable accommodations for persons with disabilities, including alternative means of communication (e.g., Braille, large print, and American Sign Language), may be requested by contacting the event contact Katharine Sharp four weeks prior to the start of the event at 785-985-3623. Requests received after this date will be honored when it is feasible to do so. Language access services, such as interpretation or translation of vital information, will be provided free of charge to limited English proficient individuals upon request.

Kansas State University is an equal opportunity provider and employer.